

ANDROSCOGGIN RIVERLANDS STATE PARK

GUIDE & MAP

A wealth of riverfront recreational opportunities just north of Lewiston-Auburn



Maine Department of Agriculture, Conservation and Forestry

Bureau of Parks and Lands
www.parksandlands.com

OVERVIEW

Ly ing near Maine's second largest urban area, Androscoggin Riverlands State Park is a 2,675-acre expanse with 12 miles of river frontage. More than half of Maine's population lives within an hour's drive of this park, which is the fifth largest in the State. An extensive trail network and undeveloped lands offer abundant recreational opportunities and habitat for wildlife. The Park is part of the larger Androscoggin Greenway and the Androscoggin River Water Trail.

TURNER LANDS (2,345 ACRES)

The larger of the Park's two sections spans 6 miles of gently rolling land along the Androscoggin's western shore in Turner. Visitors on foot, bicycle, ATV or horses can enjoy 12 miles of multi-use trails, and an additional 10 miles of foot trails (6.6 miles are shared with single-track biking) that offer great opportunities for spotting wildlife.

LEEDS LANDS (330 ACRES)

The relatively flat and forested Park lands along the east shore of the Androscoggin River are accessible by boat (primarily canoes and kayaks as the water is shallow) and—in winter—by snowmobile.



WHEN TO VISIT

Visitors enjoy the Androscoggin Riverlands year-round, with skiers and snowmobilers using the trails in winter and a mix of hikers, boaters and ATV riders in warmer seasons (ATV use is allowed between May 15 and December 15 unless otherwise posted). Hunting is popular on these lands, be sure to wear highly visible clothing (blaze orange is recommended) in fall and spring.

The Park is open year-round 9 a.m. to sunset, but is gated and accessible only for foot traffic between the end of snowmobile season and May 15, unless otherwise posted.

cover image ©danmarquisphotography.com

PROPERTY HISTORY

The Androscoggin, Maine's third largest river, begins in the mountains of New Hampshire and descends 164 miles and 1,500 vertical feet to Merrymeeting Bay. Native Americans camped and fished along its shores for over 10,000 years.

The river's steep grade (an average of 8 feet per mile) made for challenging boat travel but helped power textile and paper mills. In 1925, Gulf Island Dam was built to provide renewable hydroelectric power to meet the state's electrical needs. Its 14-mile impoundment forced the abandonment of riverside settlements.

Riverfront industries and communities generated high volumes of pollution and by the 1960s, the Androscoggin was considered one of the ten most polluted rivers in the country. Pollutants built up behind the dams, diminishing water quality.

The federal Clean Water Act, passed in 1972 and co-authored by Maine native Senator Edmund Muskie (who grew up near the Androscoggin River), markedly reduced waste discharges—improving water quality and opening up the river's recreational potential. Today the river is home to an abundance of wildlife and has become a popular destination for outdoor enthusiasts.



View of the Riverlands looking across the Androscoggin River prior to the installation of the Gulf Island Dam.

PARTNERS AND SUPPORTERS

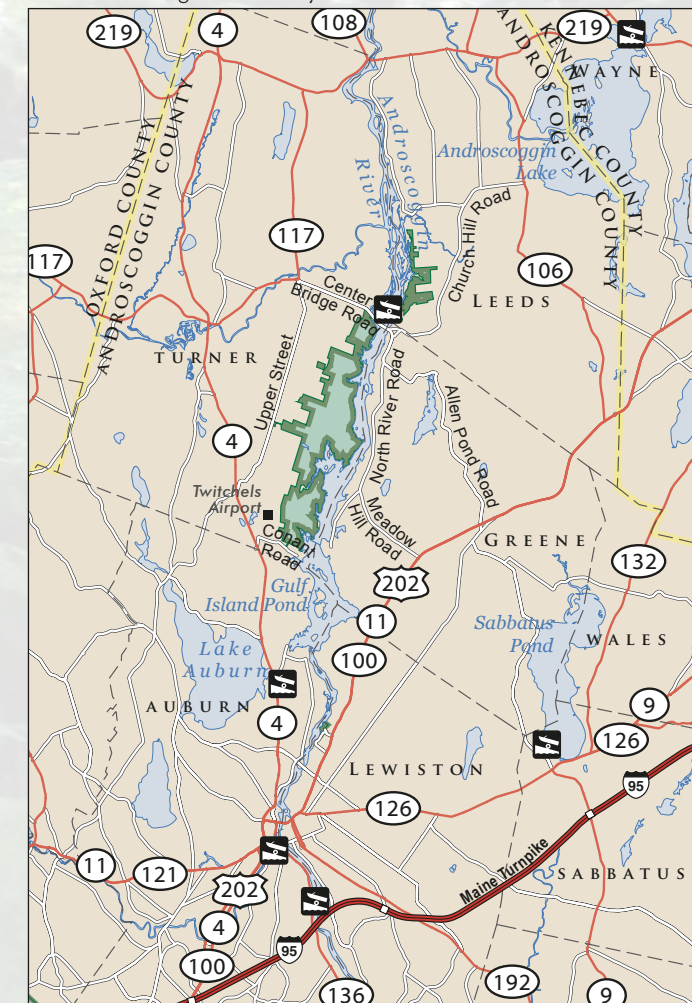
This riverfront park was preserved as a natural area for public recreational use and conservation through the hard work and commitment of local residents and organizations. A broad coalition of conservation and community groups plans for the future of the river and Androscoggin Greenway. Members include local municipalities, the Androscoggin Land Trust, Androscoggin River Watershed Council, Androscoggin River Alliance, Androscoggin Valley Council of Governments, and the Maine Bureau of Parks and Lands. Local ATV and snowmobile clubs provide trail maintenance and grooming support.

Land acquisition was negotiated with the help of the Androscoggin Land Trust, Trust for Public Land, and The Nature Conservancy. Land purchases were supported by the Land for Maine's Future Program and the National Park Service's Land and Water Conservation Fund. Recreational Trails Program money helped fund trails and this guide.

NEARBY DESTINATIONS

The Androscoggin Riverlands lie in the Maine Lakes and Mountains Region and is just a few miles north of Lewiston/Auburn. Nearby destinations include:

- **Range Pond State Park** in Poland
www.maine.gov/rangepond
- **Bradbury Mountain State Park** in Pownal
www.maine.gov/bradburymountain



- Brookfield Renewable manages and maintains the Turner and Greene boat launches and island picnic sites depicted on the park map (see reverse side of this guide) as part of a hydropower project licensed by the Federal Energy Regulatory Commission.
- Trailable and hand-carry boat launches are highly variable. Us the Online Sortable Boat Launch Table: www.maine.gov/dacf/boatlaunches

VISITOR RULES

- Kindle no fires, cut no live vegetation.
- Carry out all trash.
- ATVs must use the north entrance parking area for off-loading.
- Not all trails are open to all uses. Please see map to help determine which trails are most appropriate for your chosen activity.



©danmarquisphotography.com

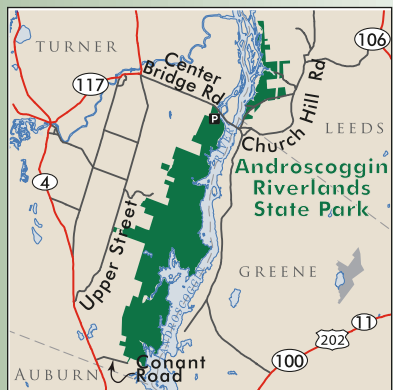
SPECIAL CONSIDERATIONS

- When boating or hiking, be prepared with extra clothing (and appropriate footwear), map and compass, and adequate water and food. Wear blaze orange during hunting seasons. Inform someone where you are going and when you expect to return.
- Thoroughly clean boats and motors to avoid importing invasive plant and animal species. FMI: www.maine.gov/dep/water/invasives
- The Maine Department of Inland Fisheries and Wildlife Warden Service enforces state fish and game laws, boating laws (on inland waters), and ATV and snowmobile laws. To learn more about applicable laws and to purchase appropriate licenses, visit www.maine.gov/ifw. For ATV and snowmobile trail maps visit www.parksandlands.com or call (207) 287-4957.
- Fish caught from the Androscoggin River should not be eaten regularly. Limit consumption to 6-12 fish meals per year. For current guidelines and information about the industrial contaminants, see the State's fishing regulations at www.maine.gov/ifw.
- Hunting is popular and encouraged on these lands so expect to encounter hunters during all legal hunting seasons. Wear blaze orange during spring and fall for your safety.

MAINE LAKES & MOUNTAINS REGION

DIRECTIONS

By Car: Take Route 117 east from Turner about 2 miles, turning right at a fork onto Center Bridge Road just before a 4-way intersection. Continue straight onto Center Bridge Road and proceed another 2 miles to the State Park's main entrance on right.



By Boat: Turner Boat Launch (a public boat launch owned and operated by Brookfield Renewable) is located 1/3 mile beyond the Park's main entrance on Center Bridge Road.

On Foot: Conant Road access (for non-motorized users) at the south end of Park or main entrance.

Lat 44.261181 / Lon -70.187399 (Center Bridge Rd. Turner)
www.maine.gov/androscogginriverlands

CONTACTS

c/o Range Pond State Park
P.O. Box 475
Poland, ME 04274
207-998-4104
www.parksandlands.com

Androscoggin Land Trust
P.O. Box 3145
Auburn, ME 04212
207-782-2302
www.androscogginlandtrust.org

Androscoggin County Chamber of Commerce
415 Lisbon Street
Lewiston, ME 04243
207-783-2249
www.androscoggincounty.com/public



SERVICES & FACILITIES

- 12 miles of multiple use/shared use trails
- 10 miles of hiking trails
- 6.6 miles of single-track mountain bike trails
- Picnic meadow including several picnic tables
- Vault toilet at north entrance on Center Bridge Road, second facility located at Picnic Meadow



ANDROSCOGGIN RIVERLANDS STATE PARK

TRAIL DESCRIPTIONS

While there are many opportunities for trail-based recreation, not all trails are open to all uses. Please read the map and trail descriptions to determine which trails are appropriate for your chosen activity. Hunting is popular on these lands, be sure to wear highly visible clothing (blaze orange is recommended) in fall and spring.

Old River Road Trail this 9.5-mile trail forms a central corridor through the Turner parcel. Its entire length is open to ATVs, hiking, mountain biking, and equestrian use. Sections (see map) are open to snowmobiling, snowshoeing, and cross-country skiing. The southern most section, the Old River Road Primitive Trail, is a technical trail for experienced ATV riders. ATVs must use the north entrance parking area for off-loading.

not all sections of trail, see map

Homestead Trail provides riverside hiking featuring historical home foundations. Travel 1.1-miles from the northern parking lot to the Picnic Meadow, and extend your hike 1.0-mile by continuing south on the Homestead Trail to the juncture with the Old River Road Trail which can be used as a return route 1.8-miles to the main entrance.

southern section only

Porcupine Path is a 1.5-mile single track Mt. bike trail that leads to a picnic meadow. This easy to moderate trail includes switchbacks and a bridge.

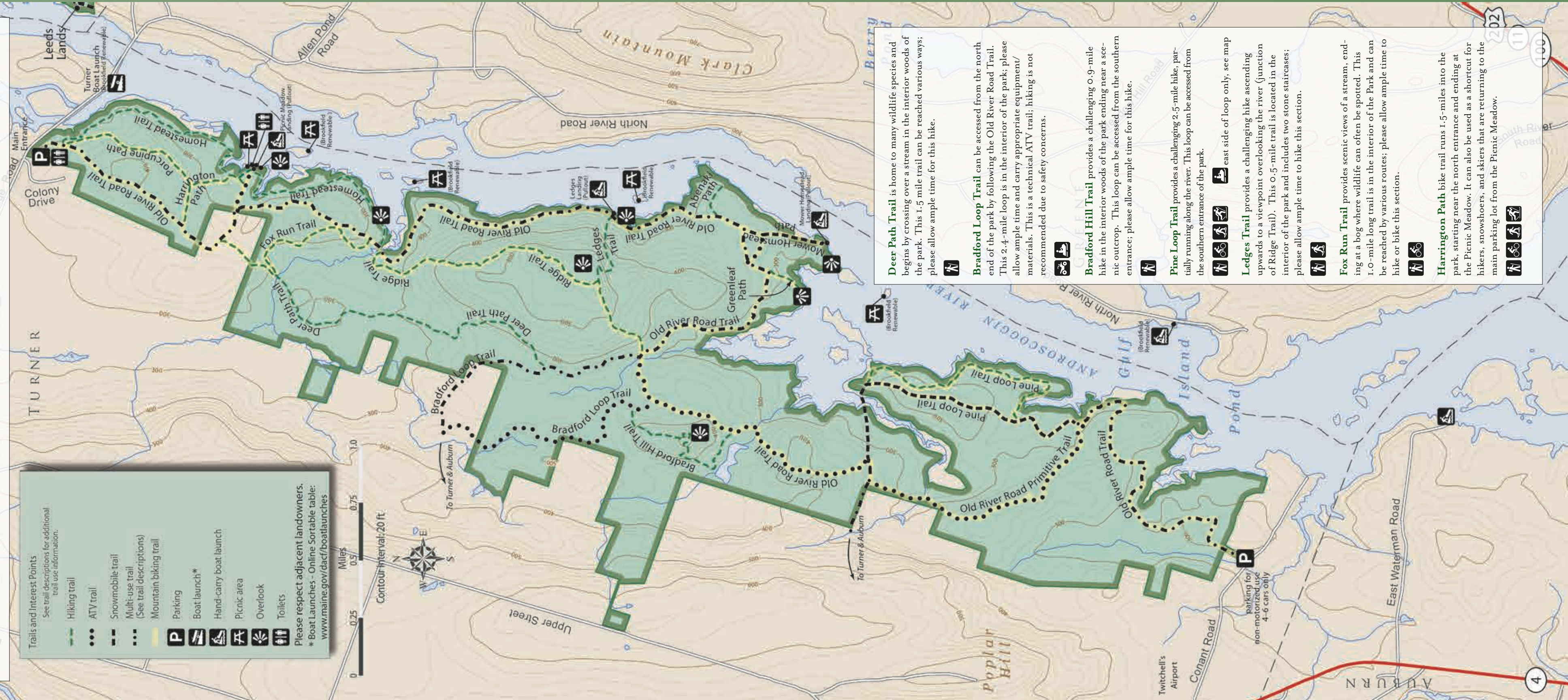
Ridge Trail provides scenic views on a ledge outcrop overlooking the river into the hills of Greene. This 1.4-mile trail is located within the interior of the park. There are various access points; please give ample time to hike this section.

2015

Trails and Interest Points
See trail descriptions for additional trail use information.

- Hiking trail
- ATV trail
- Snowmobile trail
- Multi-use trail (See trail descriptions)
- Mountain biking trail
- Parking
- Boat launch*
- Hand-carry boat launch
- Picnic area
- Overlook
- Toilets

Please respect adjacent landowners.
* Boat Launches - Online Sortable table: www.maine.gov/dacf/boatlaunches



Deer Path Trail is home to many wildlife species and begins by crossing over a stream in the interior woods of the park. This 1.5 mile trail can be reached various ways; please allow ample time for this hike.

Bradford Loop Trail can be accessed from the north end of the park by following the Old River Road Trail. This 2.4-mile loop is in the interior of the park; please allow ample time and carry appropriate equipment/materials. This is a technical ATV trail; hiking is not recommended due to safety concerns.

Bradford Hill Trail provides a challenging 0.9-mile hike in the interior woods of the park ending near a scenic outcrop. This loop can be accessed from the southern entrance; please allow ample time for this hike.

Pine Loop Trail provides a challenging 2.5-mile hike, partially running along the river. This loop can be accessed from the southern entrance of the park.

east side of loop only, see map

Ledges Trail provides a challenging hike ascending upwards to a viewpoint overlooking the river (junction of Ridge Trail). This 0.5-mile trail is located in the interior of the park and includes two stone staircases; please allow ample time to hike this section.

Fox Run Trail provides scenic views of a stream, ending at a bog where wildlife can often be spotted. This 1.0-mile long trail is in the interior of the Park and can be reached by various routes; please allow ample time to hike or bike this section.

Harrington Path bike trail runs 1.5-miles into the park, starting near the north entrance and ending at the Picnic Meadow. It can also be used as a shortcut for hikers, snowshoers, and skiers that are returning to the main parking lot from the Picnic Meadow.